



CENTRE FOR SUSTAINABLE PEACE AND DEMOCRATIC DEVELOPMENT SEED

WINTER 2023

Seed's Mission

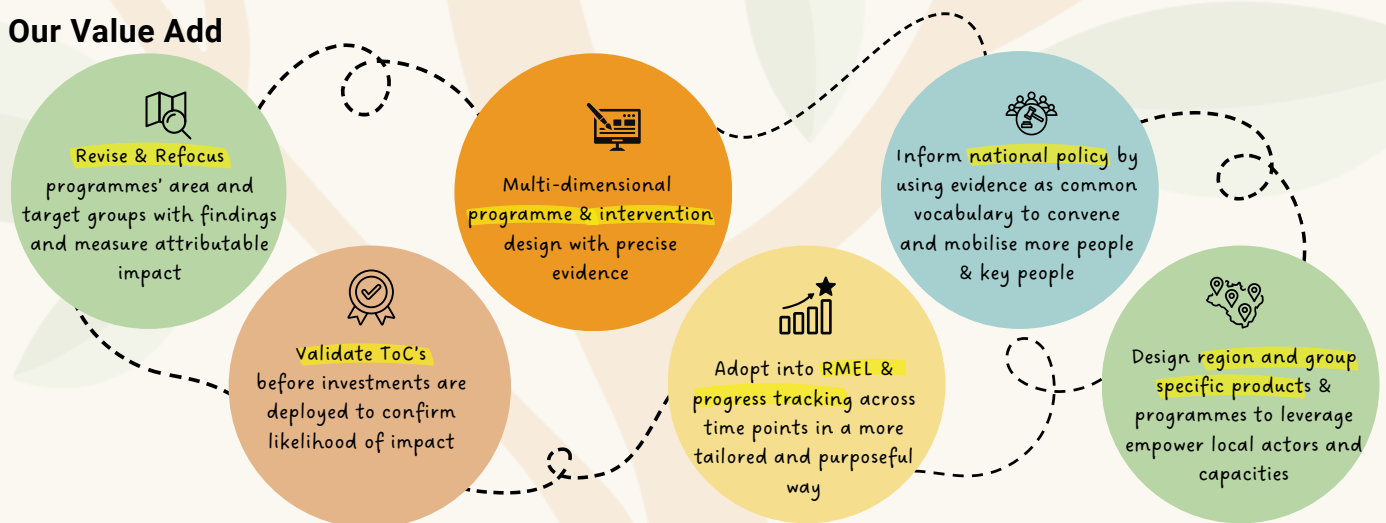
The **Centre for Sustainable Peace and Democratic Development** (Seed) is an international not-for-profit organisation headquartered in Cyprus. We are a dynamic innovation hub, uniting **peacebuilders and development architects** from conflict-affected societies. We strive to develop cutting-edge solutions for **multi-systemic recovery and resilience** by blending scientific rigor with participatory approaches.

We work along side international development organizations, governments, and civil society to craft and implement people-centered evidence-based strategies. Calibrated to the unique needs of each context, our state-of-the-art methodologies, assessment tools and intervention protocols foster **social cohesion, reconciliation, constructive citizenship, sustainable livelihoods, and wellbeing**.

Our mission is to empower peace and development architects to design and implement transformational initiatives that foster multi-systemic resilience for communities facing adversities through data driven, participatory and impactful research and interventions. We aim to make our partners, associates, allies, and evidence consumers feel...

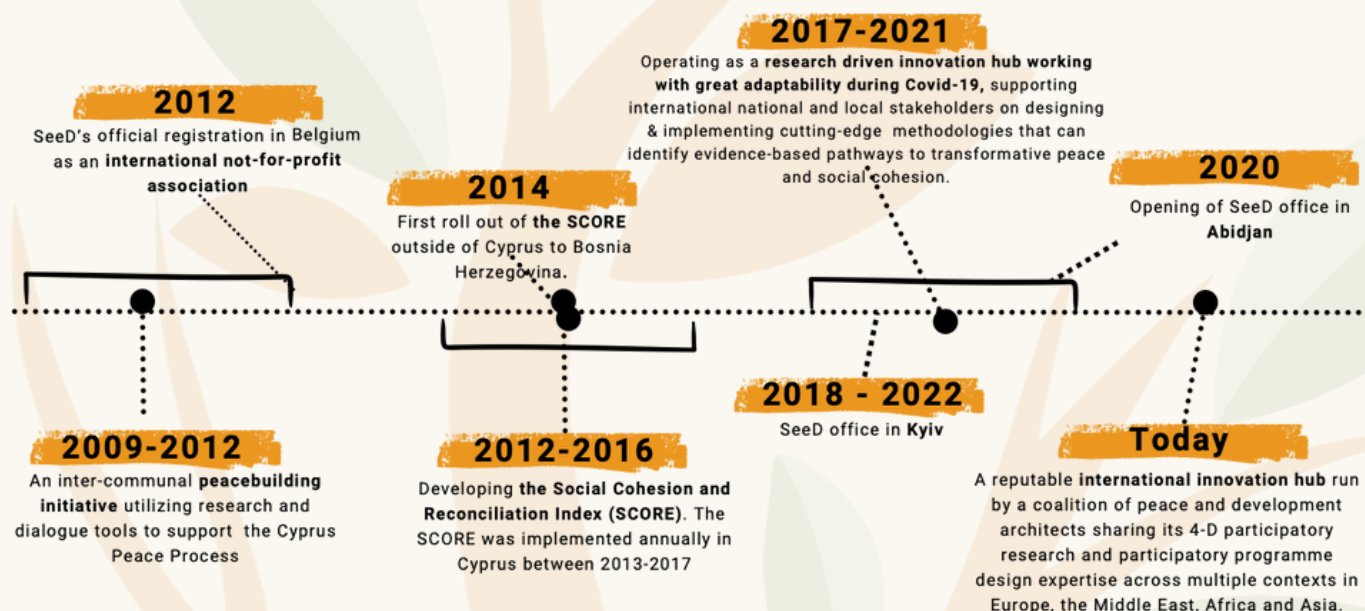
- Sense of direction and purpose
- Empowered with an
- Enriched understanding of their challenges and
- Determined to resolve them

Our Value Add



SeeD's History

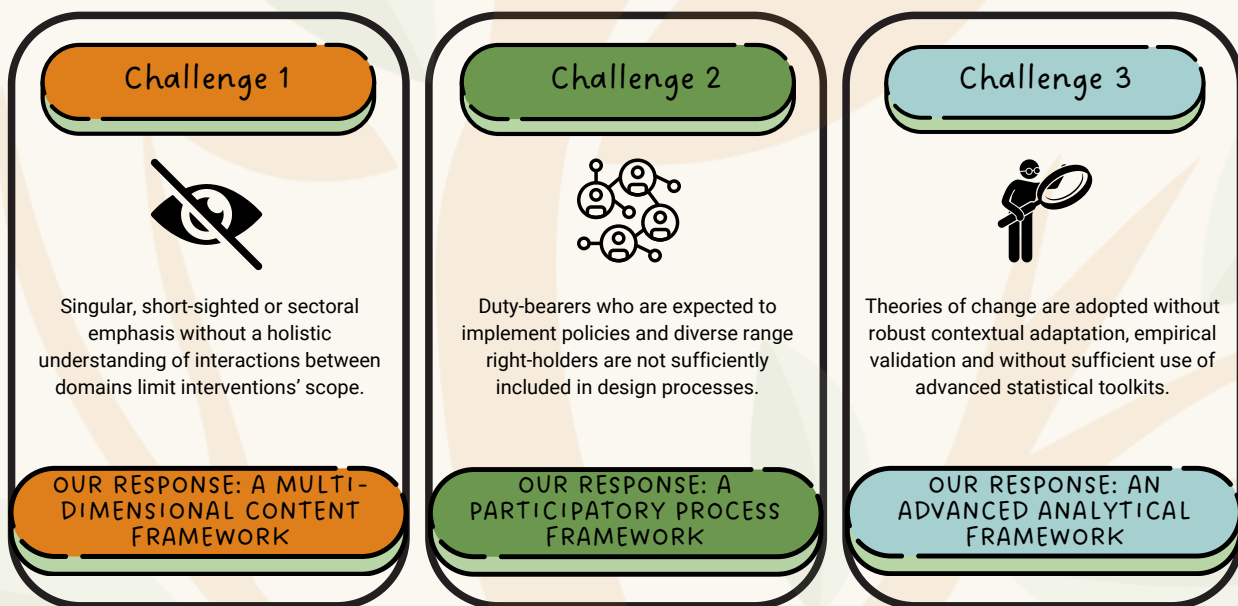
SeeD was born out of a peacebuilding project in Cyprus in 2012, when a small group of academics, researchers, and peace activists joined forces to explore to better ways of utilizing research and dialogue tools to support the Cyprus Peace Process. In partnership with UNDP and USAID, SeeD developed an innovative research tool designed to better understand the factors that can drive or hinder intergroup harmony and support for reunification. This effort led to the creation of SeeD's signature evidence-based methodology, the Social Cohesion and Reconciliation Index (SCORE). Since then, both SeeD's methods and the SCORE Index have expanded beyond Cyprus, evolving to meet the needs of diverse contexts around the world.



Today, our partnerships and programs span across more than 20 countries. We have a multi-disciplinary diverse team, working from Cyprus, Ukraine, Moldova, Georgia, Ivory Coast and the UK, with specialisations in fields such as economics, psychology, political science, peace and development, security, migration, media, and environmental studies. While SCORE remains our flagship tool, we have developed a range of other research frameworks, methodologies and intervention protocols such as those focused on life skills, collaborative livelihoods, violence prevention, and mental health and psychosocial support. Our success and impressive growth in the past decade was driven by our talented human capital, diverse contextual and theoretical research expertise, commitment to innovation and scholarly rigor, and our flexible, adaptive organisational structure.

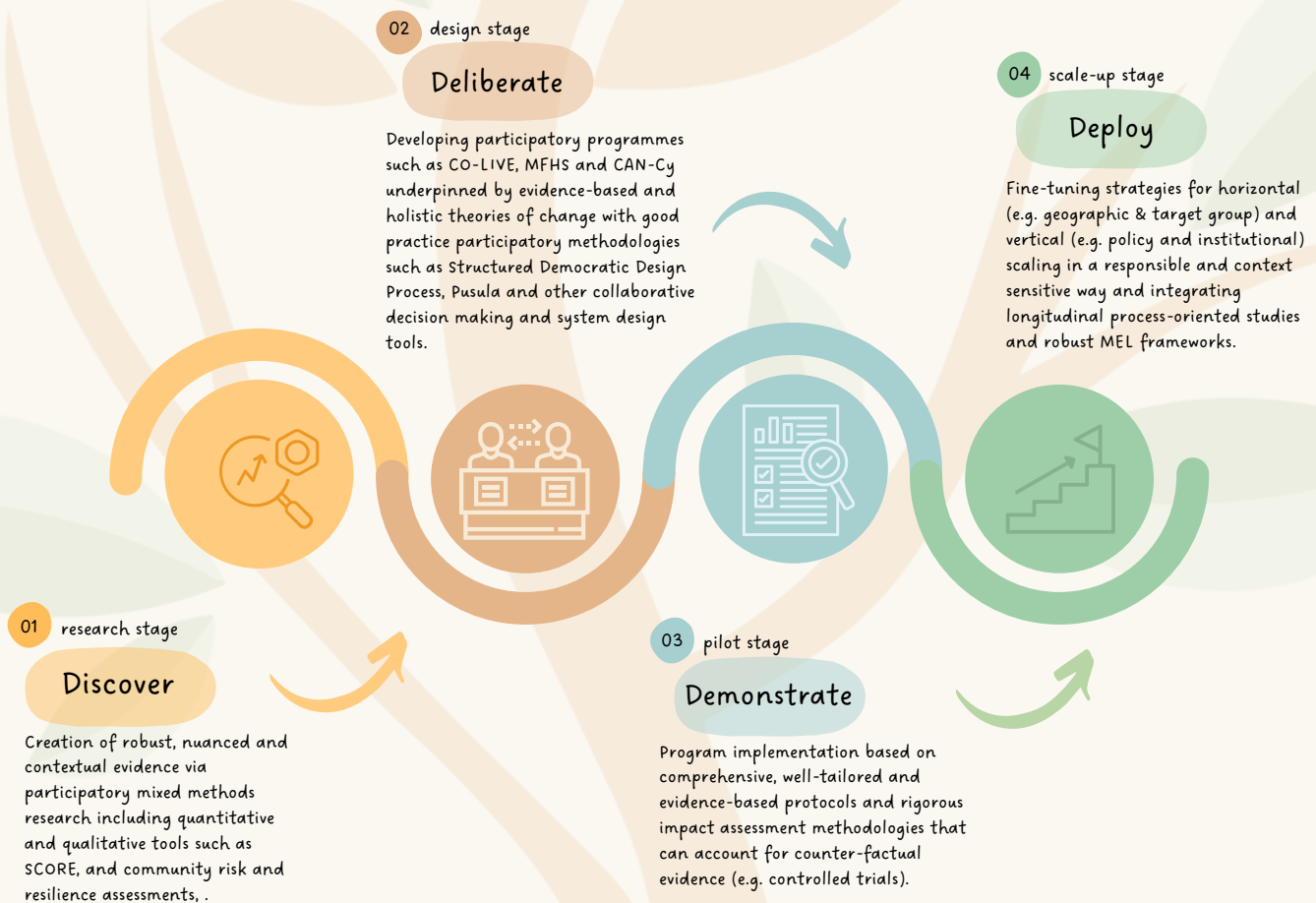
Seed's Diagnosis

We believe that a weak **evidence base** and lack of **meaningful participation** undermine the impact and effectiveness of peace and development programmes and policies. This also hinders coherent and precise responses to socio-political, psychological, economic and environmental challenges we face. As conflict and adversities and conflict become more **interconnected and complex**, the resources available to address them are shrinking. This creates an urgent need for evidence-based policymaking and programming, as well as reliable data for both intervention design and impact assessment. Our approach tackles this challenge by helping partners better understand how limited resources can be leveraged for high-impact results. We work closely with partners to design and test transformative theories of change before endorsing, scaling or investing in new interventions that can effectively foster social cohesion and resilience.



SeeD's 4D Approach

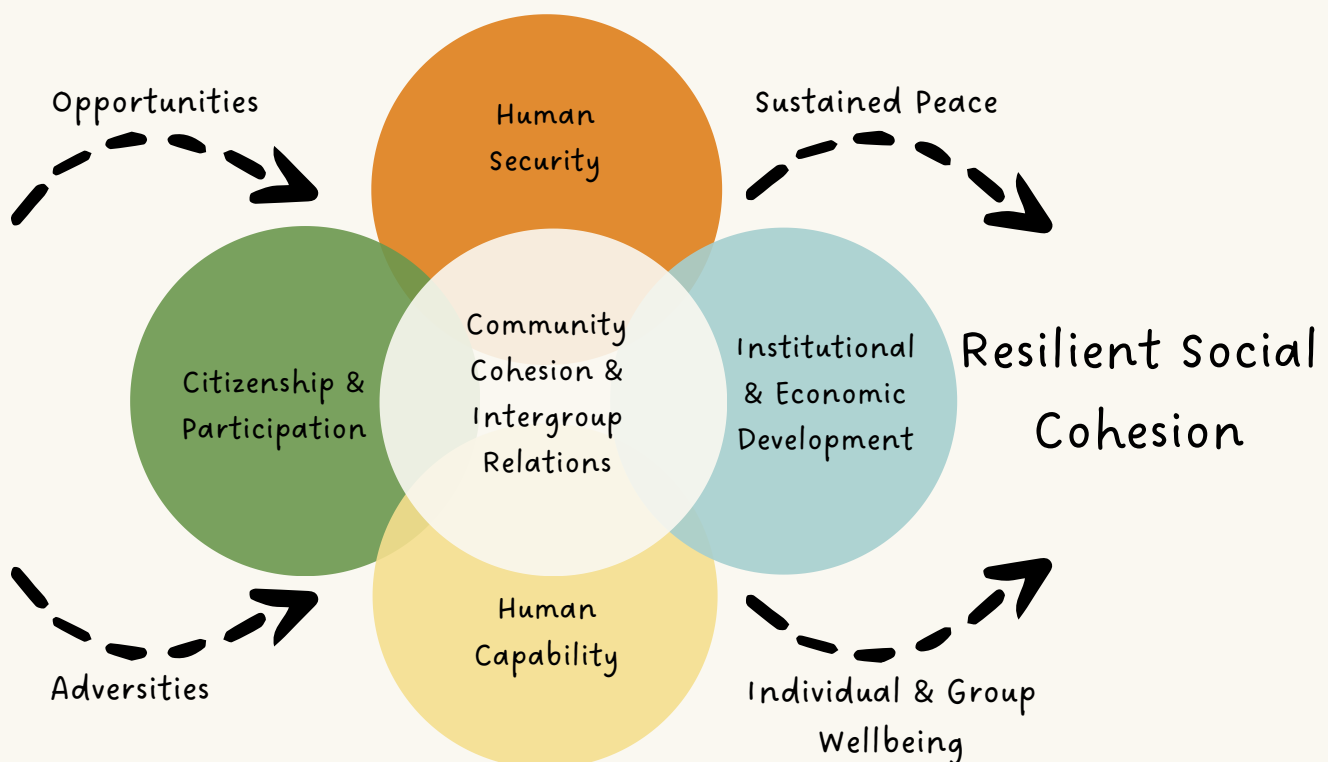
In a nutshell, SeeD develops versatile and robust research methodologies along with interventions in social cohesion, sustainable livelihoods, constructive citizenship, and trauma healing, through participatory dialogue and consultations. We investigate context specific optimal pathways towards achieving positive social change and use gold-standard deliberative methods to inform the design of intervention protocols that draw on collective wisdom. These are then rigorously pilot tested to account for counterfactual evidence and validate impact before scaling up. This approach not only maximizes the efficiency and effectiveness of time and resources but also ensures responsible and ethical practice. Our work enhances resource allocation and the precision of peace and development efforts. Our participatory research methods value and cultivate local capacities and ownership, while our advanced analytical tools close the evidence gap and demonstrate measurable impact. Ultimately, our results support our partners in building peaceful societies, empowering women and youth, strengthening citizen connectedness, and fostering resilience.



Participatory Population Research

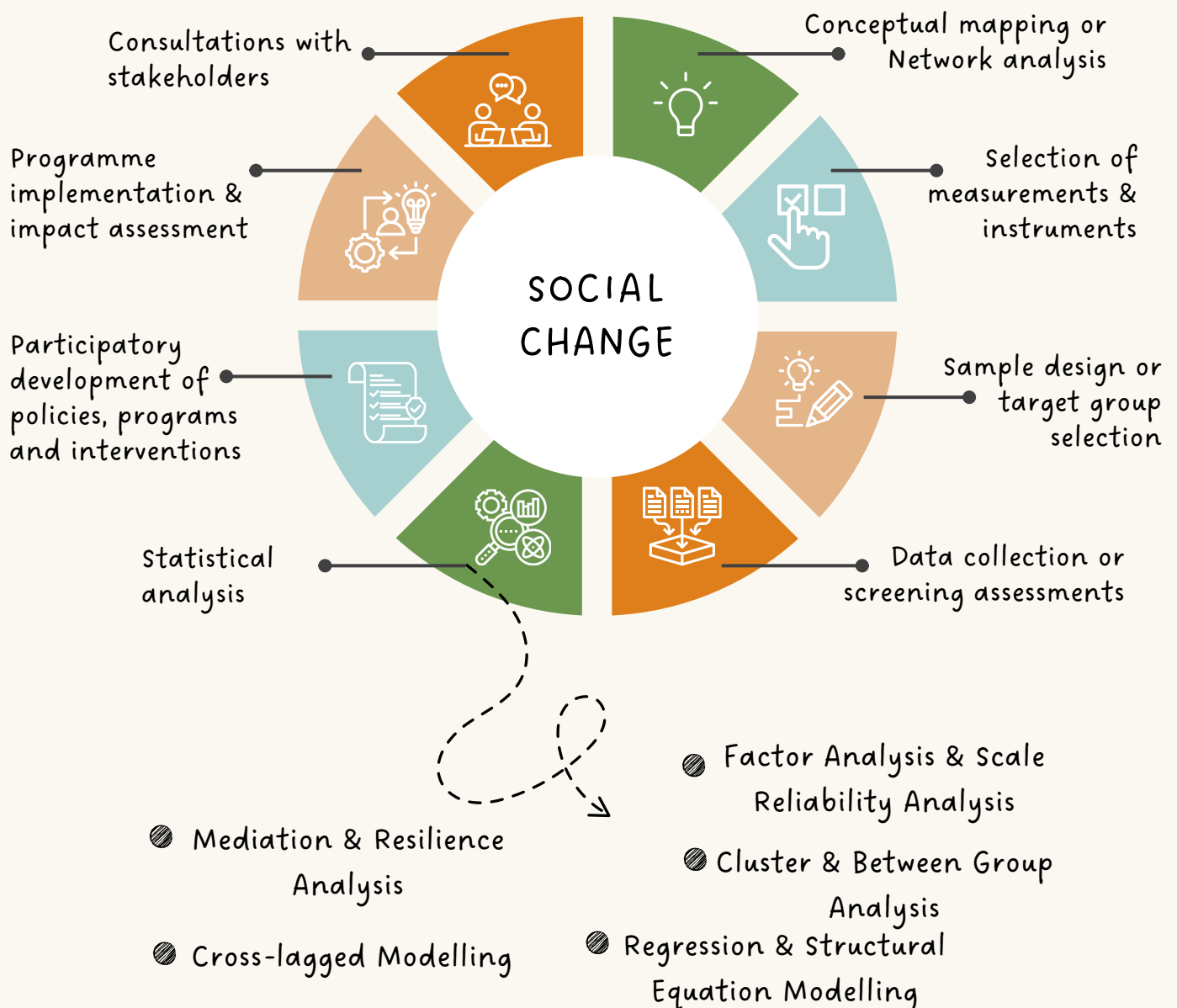
SeeD's methodological approaches draw inspiration from multiple scientific disciplines such as sociology, psychology, international relations, and security studies and are flexible enough to incorporate new research findings, global policy guidelines, and the realities of each local and regional context. All our research frameworks and tools are underpinned by a Content Framework, which helps us align research objectives with the specific policy outcomes of different partners, a Process Framework, which adopts participatory research principles and ensures local ownership of project results; and an Analytical Toolkit, which combines different advanced statistical methods for scientifically robust investigation of data sets.

Content Framework boasts multiple research frameworks (e.g. life skills framework, employability framework, civic development framework) and a library of measurement metrics (i.e. more than 300 indicators). Our measurement metrics and frameworks are grouped under five main dimensions that include civic, psychosocial, economic, institutional, and intergroup elements, and the way they interact with global and contextual opportunities and adversities. This content framework provides a strong foundation for the multi-leveled and holistic approach to tailor to different evidence needs.



Participatory Design

Process Framework incorporates participatory research and design principles to ensure context sensitivity, to build local ownership and alliances, to integrate good practices and robust evidence while capitalising on local expertise and endogenous capacities, and to help align objectives and theories of change with the outcomes of interest of different peace and development actors. This process framework guides the design of SeeD's all research tools and intervention protocols.



Bosnia-Herzegovina

Nepal

East Timor

Iraq

Malaysia

Armenia

South Sudan

Zimbabwe

Afghanistan

Mali

Somalia



Caribbean

Cyprus

Ukraine

Ivory Coast

Moldova

Niger

Rwanda

Burkina Faso

Liberia

Bangladesh

Ethiopia

